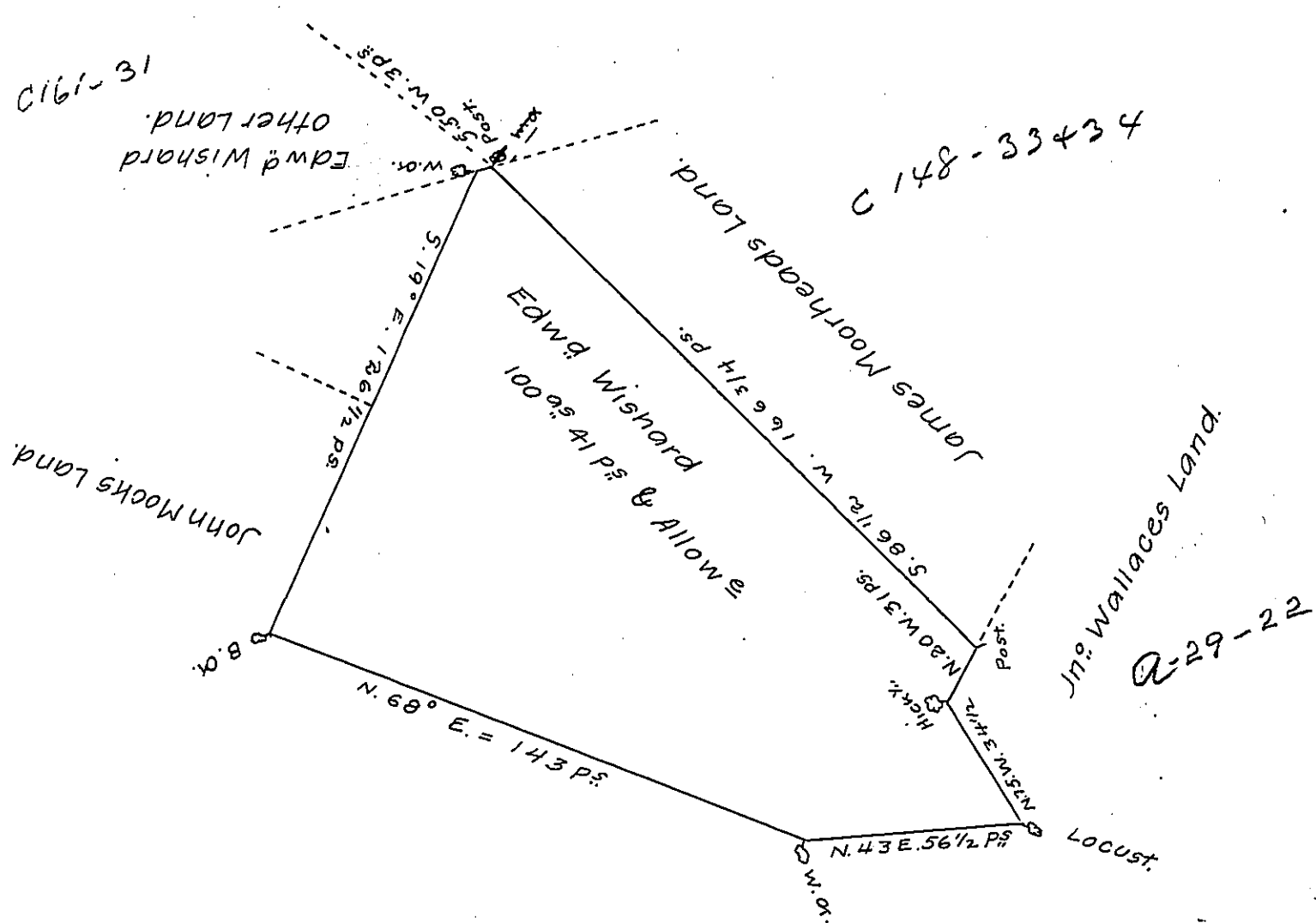


FORM No. 1.



part of ^{Acres} 148 1/4 & Allow^{ce}
 survey'd on wt to Jno Moorhead
 Dated the 4th June 1762.

Feb^y. 11th, 1786
 surveyed the above for
 Edw. Wishard by M^r Henderson's
 order.

James Johnston.
 now Washington

The above Draft describes a Part of a Tract of Land situate in Antrim Township in the County of Franklin Containing One hundred Acres & a quarter and an Allowance of Six & Cent for Roads &c., the Survey of which I think has been accurately made for Edward Wishard, who is to shew his Rights in order to obtain a Patent for the same.

Mat^w Henderson, D.S.

To John Lukens Esq^r
 Surveyor General.

IN TESTIMONY that the above is a copy of the original remaining on file in the Department of Internal Affairs of Pennsylvania, made conformably to an Act of Assembly approved the 16th day of February 1833, I have hereunto set my hand and caused the Seal of said Department to be affixed at Harrisburg, this sixth day of June 1907.

Henry Howck
 Secretary of Internal Affairs.